

## ***The Conservation Areas Reporting and Tracking System (CARTS)***

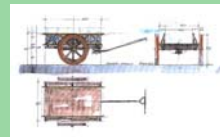
*An update and a look ahead*



**CCEA AGM  
November, 2009**

## **Outline of presentation**

- 1) Review of CARTS and how it works.
- 2) Ongoing activities
- 3) Outlook – What's next?



## CARTS

- Web based system presented in the form of a portal.
- Displays maps and reports pertaining to Federal and Provincial/Territorial protected areas.
- Reports are based on a suite of related attributes
- Information derived from the Canadian Council on Ecological Areas (CCEA)

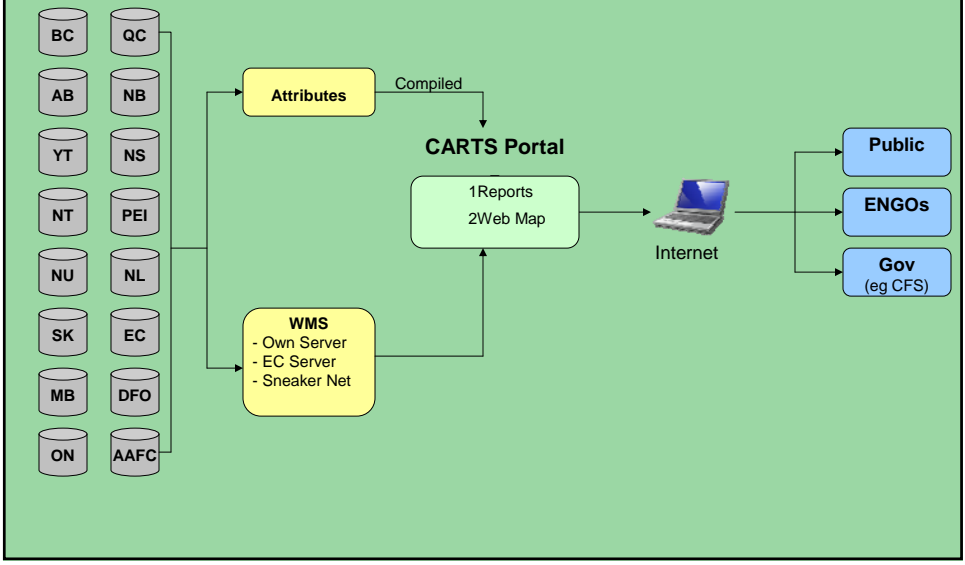


## Objectives

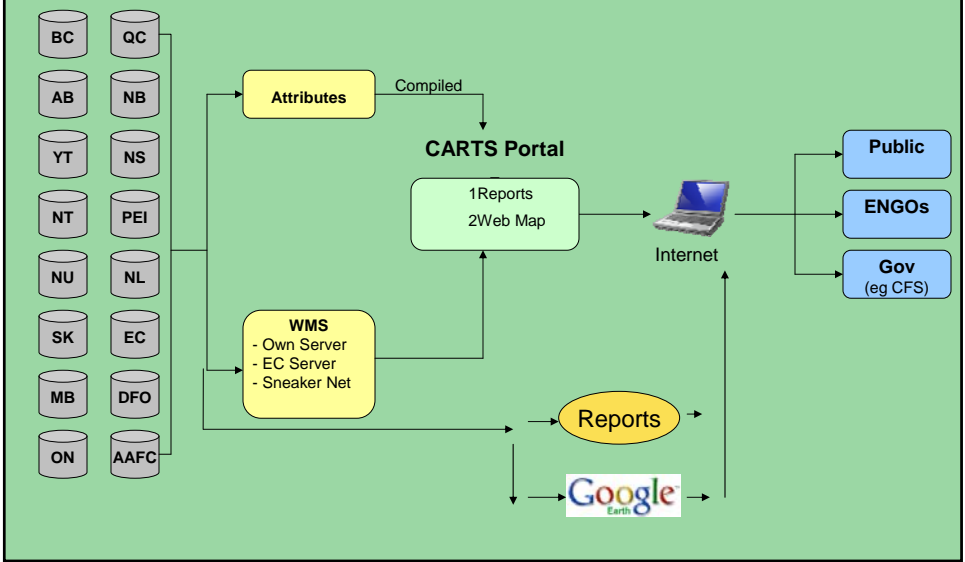
- Compile and maintain authoritative and timely Protected Areas information for all of Canada
- Provide a way to easily visualize and report on Protected Area information



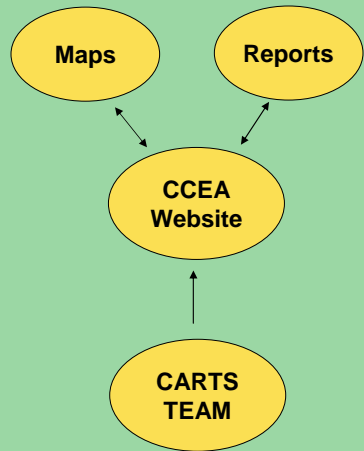
# CARTS architecture (The vision)



# CARTS architecture (current)

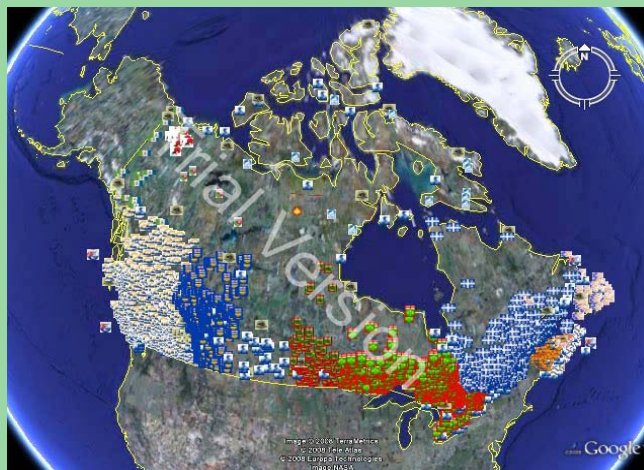


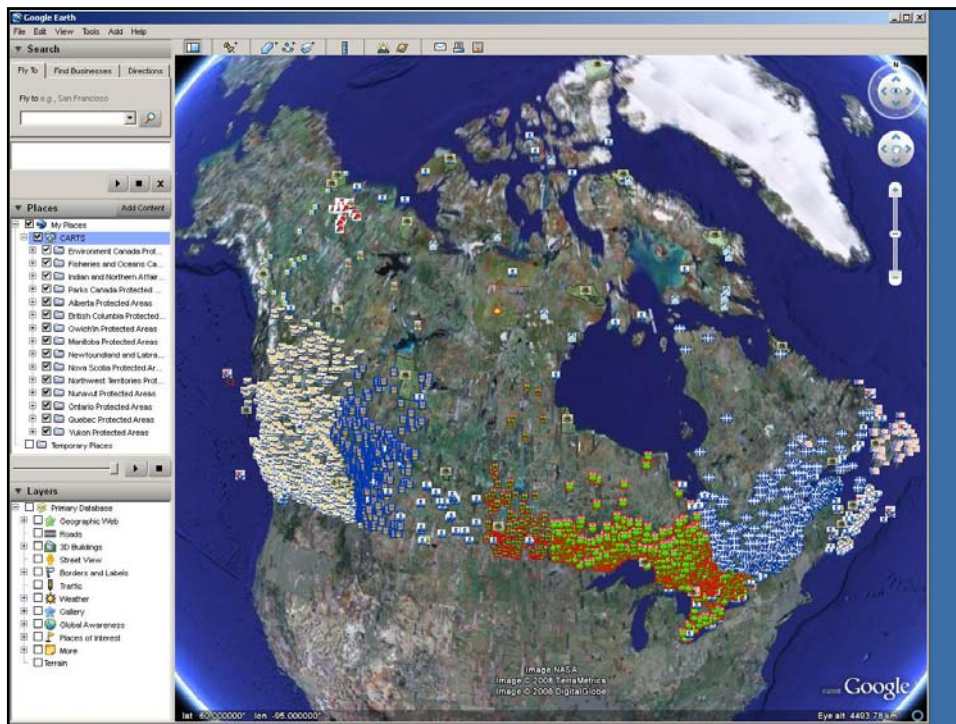
# Methodology



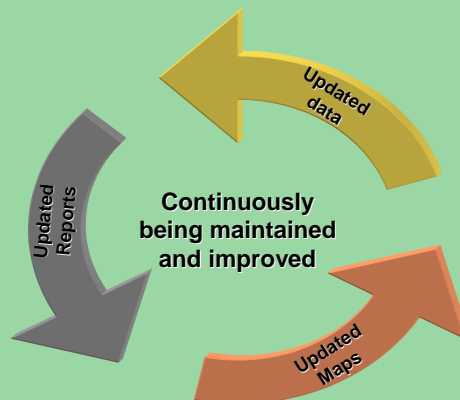
- CARTS team formats and compiles data from jurisdictions
- Spatial data is published in KML format to be **viewed** with global viewers such as Google Earth.
- Statistical reports are published on the CCEA website.

# Visualization





An ongoing process ...



## Application of IUCN Classification

- All jurisdictions apply the IUCN classification system to position Canada within an international PA context.
- IUCN class is one field in the CARTS schema.
- CCEA is the leading agency in Canada to apply IUCN classification of PAs within a Canadian context.

## Current Status

- Governance structure well established
- Web site up to date
- IUCN Guidebook published
- Atlas framework (version 2)
- Adapting schema to report on marine PAs
- Portal in development in EC
- Jurisdictions at different stages of implementation (WMS)
- Federal properties on WDPA



## Path Forward

- Continue update CCEA web site
  - New Standard reports current as of 2009
  - Link to Google Earth
- Finalize the development of the EC hosted CARTS portal (WMI)
- Explore new platforms
- Initiate the incorporation of Private PAs into CARTS
- Update and publish IUCN Guidebook, version 2
- Framework Layer version 3 in preparation
- International contribution to CEC, WDPA, Ramsar
- Incorporation into Geobase, NTDB

